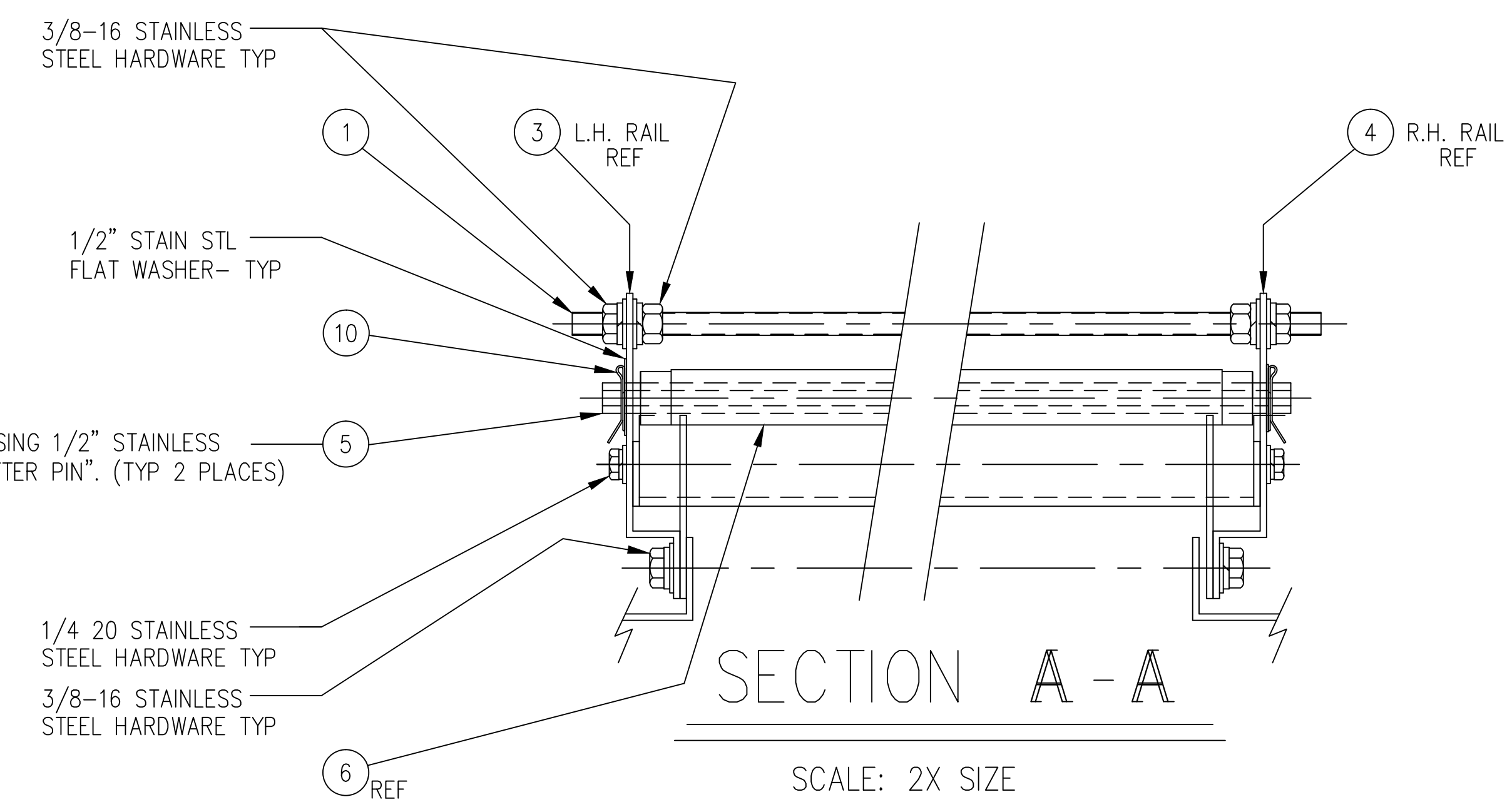
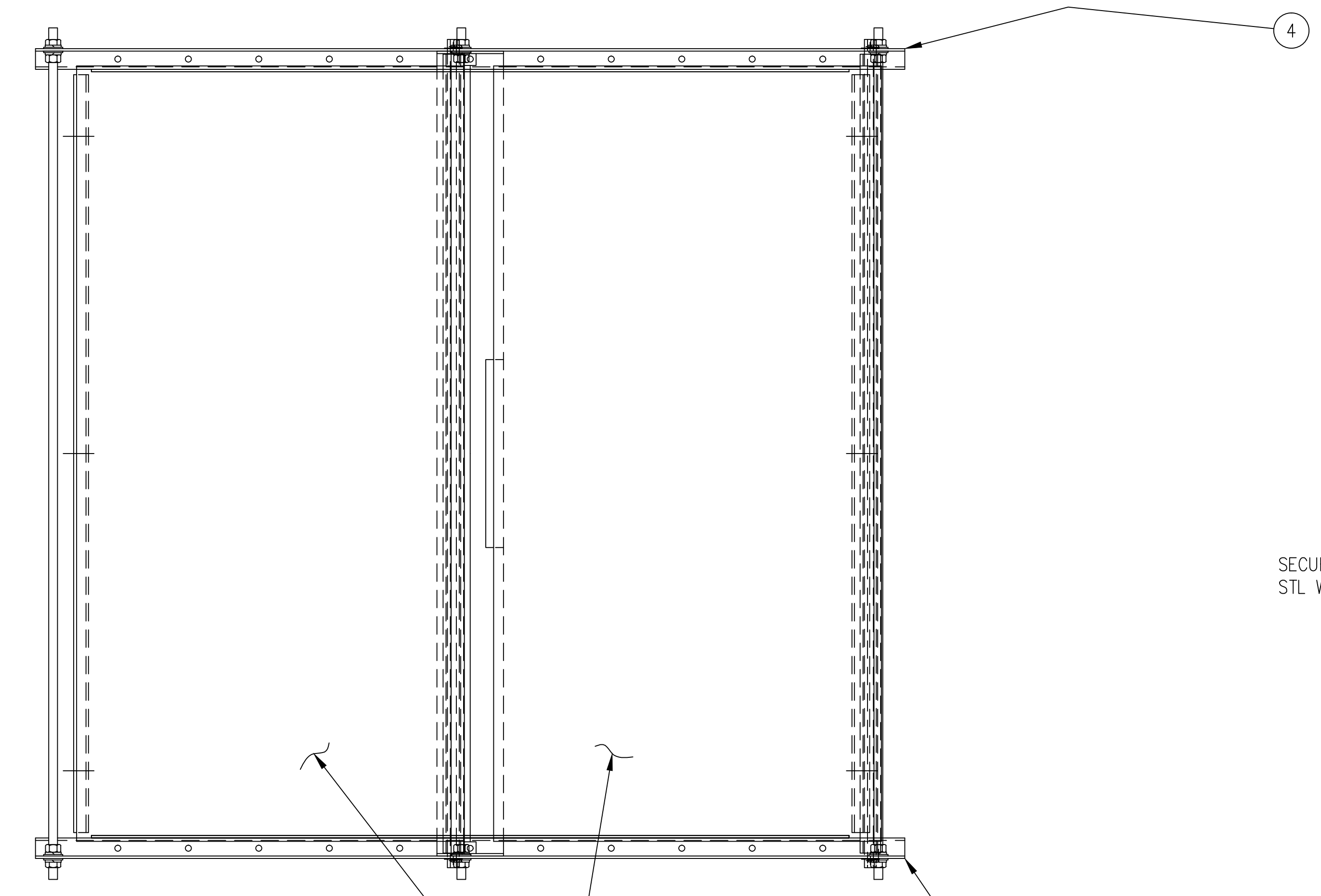


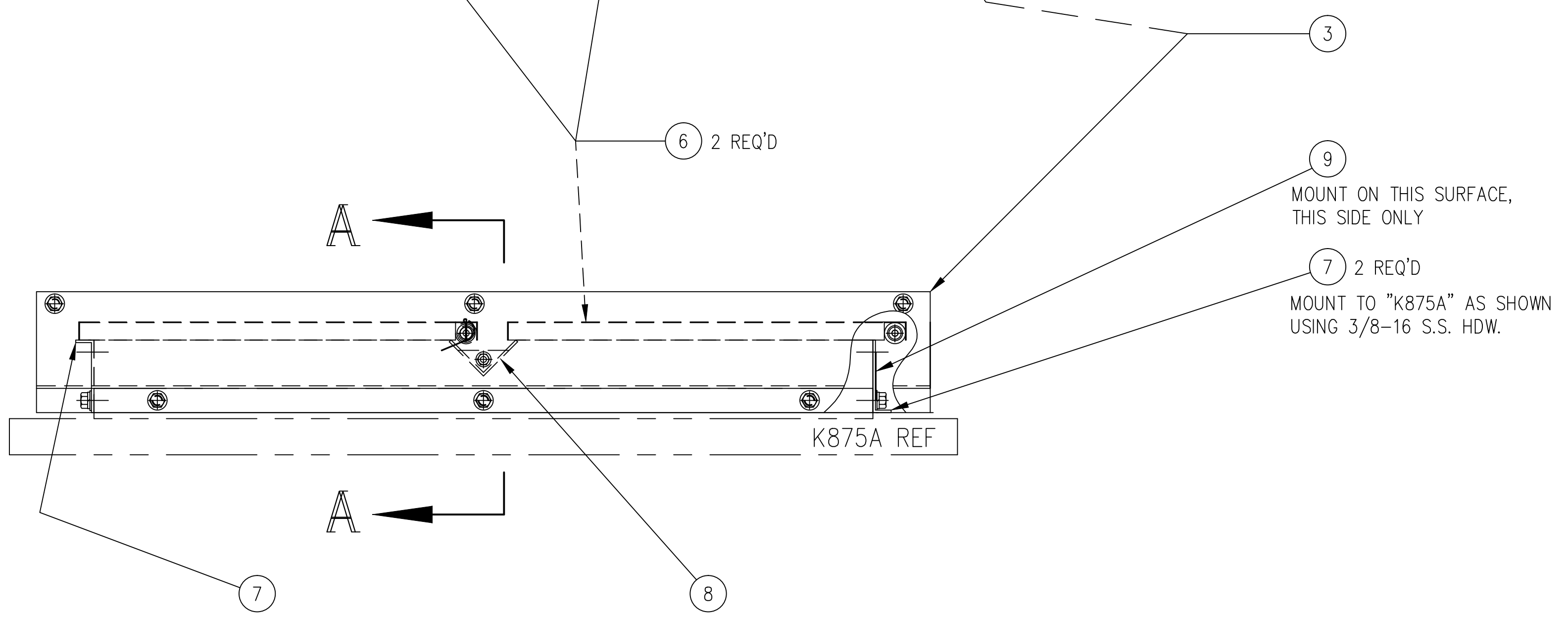
REVISIONS				
ECN NO.	REV	DESCRIPTION	DATE	APPROVED
CC297	A	REV PER ECN. ITEM 2 WAS PN 900624, QTY 3, TUBING, 34.25" LG.	J.FLAUTO 8/25/00	J.EMERY 8/28/00
CC373	B	ITEM 5 WAS 900614 (.5 DIA SST TUBING)	TURNMIRE 11/6/00	J.EMERY 11/7/00
AK589	C	ITEM 1 WAS 900896	ZMECEK 3/29/02	PALINKAS



SECURE ASSEMBLY IN PLACE USING 1/2" STAINLESS STL WASHER AND ITEM 10 "COTTER PIN". (TYP 2 PLACES)

SECTION A - A

SCALE: 2X SIZE



ITEM NO.	NO. REQD	PART NO.	DESCRIPTION	MATERIAL
10	4	461706	COTTER PIN, $\phi$ 3/32 x 2"	STAINLESS STEEL
9	1	D31360	WARNING LABEL	
8	1	D31359	TROUGH, HATCH COVER	
7	2	D31358	END CAP	
6	2	D31357	COVER, HATCH	
5	2	B27942	PIVOT TUBE	
4	1	D31356-2	RAIL, SIDE, R.H.	
3	1	D31356-1	RAIL, SIDE, L.H.	
2				
1	3	660235	STUD, CONTINUOUS THREAD	STAINLESS STEEL

LIST OF MATERIAL

THIS DOCUMENT CONTAINS PROPRIETARY INFORMATION OF AVTRON MFG., INC. AND MAY NOT BE DISCLOSED TO OTHERS OR USED FOR MANUFACTURING PURPOSES WITHOUT THE WRITTEN CONSENT OF AVTRON MFG.

UNLESS OTHERWISE SPECIFIED DIMENSIONS ARE IN INCHES	DRAWN J. EMERY	DATE 6/1/00
TOLERANCES: ANGLES $\pm 1^\circ$ DECIMALS .XX $\pm$ .XXX $\pm$	CHECKED J. EMERY	6/16/00
FINISH	ENG APVD J. EMERY	6/16/00
PAINT PER PS	APVD PROD G ZIMMERMAN	6/21/00
PLATE PER		
COAT PER PS		
ANODIZED PER		
OTHER		
NEXT ASSY	USED ON	
APPLICATION		

7900 E.PLEASANT VALLEY ROAD  
 INDEPENDENCE, OH 44131-5529

**ASSEMBLY EXHAUST HOOD, GRAVITY**

SIZE D CAGE NO. 01014 DWG. NO. D31346 REV C

SCALE 1/4 MODEL K875A SHEET 1 OF 1

UNLESS OTHERWISE SPECIFIED THE ABOVE NOTES APPLY